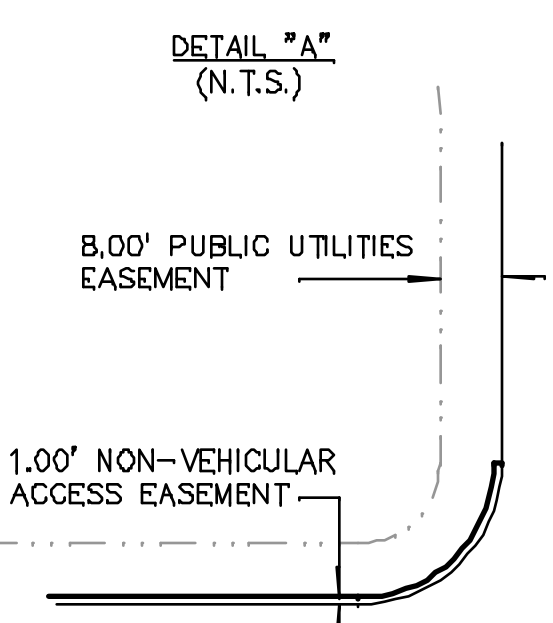


- LEGEND**
- Fd. Marked Stone
 - Fd. ADOT Brass Cap Right-of-Way Marker
 - Fd. 1/2" Rebar in 1" Pipe w/ Tag #LS17353
 - ⊙ Fd. 1/2" Rebar w/ Brass Cap in Concrete Marked Holmquist LS25074
 - ⊙ Fd. 1/2" Rebar w/ Yellow Plastic Cap Marked "LS13168"
 - Fd. 1/2" Rebar w/ Aluminum Cap, No LS#
 - Fd. 1/2" Pipe, No LS Tag
 - ⊙ Set 1/2" Rebar w/ Orange Plastic Cap Marked "TERRA RLS 31598"
 - ▲ Set 1/2" Rebar w/ Orange Plastic Cap Marked "TERRA RLS 31598"
 - Set Roadway Centerline Marker per La Paz County Standard 4-080
 - Not Fd., Not Set
 - L# Line Number - See Line Table
 - C# Curve Number - See Curve Table
 - NVAE 1' Non-Vehicular Access Easement - See Detail "A"
 - PUE 8' Public Utilities Easement - See Detail "A"
 - Open Space Easement & Construction Limit



FINAL PLAT
SUNLAND ESTATES UNIT 1
TRACT NO. _____
A PORTION OF
N 1/2, SECTION 20
TOWNSHIP 5 NORTH, RANGE 13 WEST
GILA & SALT RIVER MERIDIAN,
LA PAZ COUNTY, ARIZONA

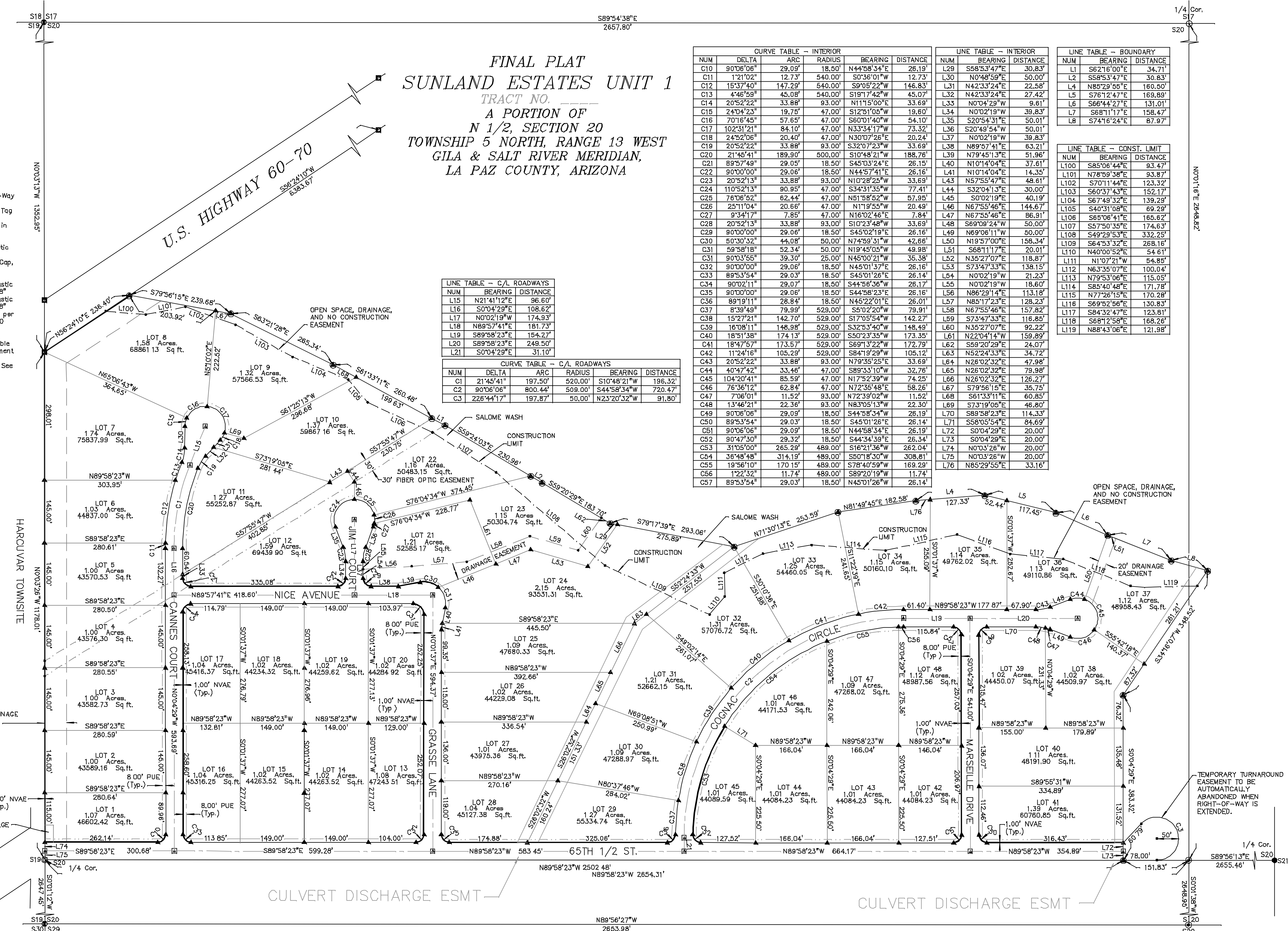
CURVE TABLE - INTERIOR					LINE TABLE - INTERIOR					LINE TABLE - BOUNDARY				
NUM	DELTA	ARC	RADIUS	BEARING	DISTANCE	NUM	BEARING	DISTANCE	NUM	BEARING	DISTANCE	NUM	BEARING	DISTANCE
C10	90°06'06"	29.09'	18.50'	N44°58'34"E	26.19'	L29	S58°53'47"E	30.83'	L1	S62°16'00"E	34.71'	L100	S85°06'44"E	93.47'
C11	1°21'02"	12.73'	540.00'	S0°36'01"W	12.73'	L30	N0°48'59"E	50.00'	L2	S58°53'47"E	30.83'	L101	N78°59'38"E	93.87'
C12	15°37'40"	147.29'	540.00'	S9°05'22"W	146.83'	L31	N42°33'24"E	22.58'	L4	N85°29'55"E	160.50'	L102	S70°11'44"E	123.32'
C13	4°46'59"	45.08'	540.00'	S19°17'42"W	45.07'	L32	N42°33'24"E	27.42'	L5	S67°12'47"E	169.89'	L103	S60°37'43"E	152.17'
C14	20°52'22"	33.88'	93.00'	N11°15'00"E	33.69'	L33	N0°04'29"W	9.61'	L6	S66°44'27"E	131.01'	L104	S67°49'32"E	139.29'
C15	2°04'23"	19.75'	47.00'	S12°51'05"W	19.80'	L34	N0°02'19"W	39.83'	L7	S68°11'17"E	158.47'	L105	S40°31'08"E	69.29'
C16	70°16'45"	57.65'	47.00'	S60°01'40"W	54.10'	L35	S20°54'31"E	50.01'	L8	S74°16'24"E	87.97'	L106	S65°06'41"E	165.62'
C17	102°31'21"	84.10'	47.00'	N33°34'17"W	73.32'	L36	S20°49'54"W	50.01'				L107	S57°50'35"E	174.63'
C18	24°52'06"	20.40'	47.00'	N30°07'26"E	20.24'	L37	N0°02'19"W	39.83'				L108	S49°29'53"E	132.25'
C19	20°52'22"	33.88'	93.00'	S32°07'23"W	33.69'	L38	N89°57'41"E	63.21'				L109	S64°53'32"E	268.16'
C20	21°45'41"	189.90'	500.00'	S10°48'21"W	188.76'	L39	N79°45'13"E	51.96'				L110	N40°00'52"E	54.61'
C21	89°57'49"	29.05'	18.50'	S45°03'24"E	26.15'	L40	N10°14'04"E	37.61'				L111	N1°07'21"W	54.85'
C22	90°00'00"	29.06'	18.50'	N44°57'41"E	26.16'	L41	N10°14'04"E	14.35'				L112	N63°35'07"E	100.04'
C23	20°52'13"	33.88'	93.00'	N10°28'25"W	33.69'	L43	N57°55'47"E	48.61'				L113	N79°53'06"E	115.05'
C24	110°52'13"	90.95'	47.00'	S34°31'35"W	77.41'	L44	S32°04'13"E	30.00'				L114	S85°40'48"E	171.78'
C25	76°06'52"	62.44'	47.00'	N51°58'52"W	57.95'	L45	S0°02'19"E	40.19'				L115	N77°26'15"E	170.28'
C26	25°11'04"	20.66'	47.00'	N11°19'55"W	20.49'	L46	N67°55'46"E	144.67'				L116	S69°52'56"E	130.83'
C27	9°34'17"	7.85'	47.00'	N16°02'46"E	7.84'	L47	N67°55'46"E	86.91'				L117	S84°32'47"E	123.81'
C28	20°52'13"	33.88'	93.00'	S10°23'48"W	33.69'	L48	S69°09'24"W	50.00'				L118	S68°12'58"E	168.26'
C29	90°00'00"	29.06'	18.50'	S45°02'19"E	26.16'	L49	N69°08'11"W	50.00'				L119	N88°43'06"E	121.98'
C30	50°30'32"	44.08'	50.00'	N74°59'31"W	42.86'	L50	N19°57'00"E	158.34'						
C31	59°58'18"	52.34'	50.00'	N19°45'05"W	49.98'	L51	S68°11'17"E	20.01'						
C32	90°03'55"	39.30'	25.00'	N45°00'21"W	35.38'	L52	N35°27'07"E	118.87'						
C33	90°00'00"	29.06'	18.50'	N45°01'37"E	26.16'	L53	S73°47'33"E	138.15'						
C34	89°53'54"	29.03'	18.50'	S45°01'26"E	26.14'	L54	N0°02'19"W	21.23'						
C35	90°02'11"	29.07'	18.50'	S44°56'36"W	26.17'	L55	N0°02'19"W	18.60'						
C36	89°19'11"	28.84'	18.50'	N45°22'01"E	26.01'	L56	N86°29'14"E	113.18'						
C37	8°39'49"	79.99'	529.00'	S5°02'20"W	79.91'	L57	N85°17'23"E	128.23'						
C38	15°27'21"	142.70'	529.00'	S17°05'54"W	142.27'	L58	N67°55'46"E	157.82'						
C39	16°08'11"	148.98'	529.00'	S32°53'40"W	148.49'	L59	S73°47'33"E	116.85'						
C40	18°51'58"	174.13'	529.00'	S50°23'35"W	173.35'	L60	N35°27'07"E	92.22'						
C41	18°47'57"	173.57'	529.00'	S69°13'22"W	172.79'	L61	N22°04'14"W	159.89'						
C42	11°24'16"	105.29'	529.00'	S84°19'29"W	105.12'	L62	S59°20'29"E	24.07'						
C43	20°52'22"	33.88'	93.00'	N79°35'25"E	33.69'	L63	N52°24'33"E	34.72'						
C44	40°47'42"	33.46'	47.00'	S89°33'10"W	32.76'	L64	N26°02'32"E	47.98'						
C45	104°20'41"	85.59'	47.00'	N17°52'39"W	74.25'	L65	N26°02'32"E	126.27'						
C46	76°36'12"	62.84'	47.00'	N72°35'48"E	58.26'	L66	N26°02'32"E	35.75'						
C47	7°06'01"	11.52'	93.00'	N72°39'02"W	11.52'	L67	S79°56'15"E	35.75'						
C48	13°46'21"	22.36'	93.00'	N83°05'13"W	22.30'	L68	S61°33'11"E	60.85'						
C49	90°06'06"	29.09'	18.50'	S44°58'34"W	26.19'	L69	S73°19'05"E	46.80'						
C50	89°53'54"	29.03'	18.50'	S45°01'26"E	26.14'	L70	S89°58'23"E	114.33'						
C51	90°06'06"	29.09'	18.50'	N44°58'34"E	26.19'	L71	S58°05'54"E	84.69'						
C52	90°47'30"	29.32'	18.50'	S44°34'39"E	26.34'	L72	S0°04'29"E	20.00'						
C53	31°05'00"	265.29'	489.00'	S16°21'36"W	262.04'	L73	N0°03'26"W	20.00'						
C54	36°48'48"	314.19'	489.00'	S50°18'30"W	308.81'	L74	N0°03'26"W	20.00'						
C55	18°56'10"	170.15'	489.00'	S78°40'59"W	169.29'	L75	N85°29'55"E	33.16'						
C56	1°22'32"	11.74'	489.00'	S89°20'19"W	11.74'									
C57	89°53'54"	29.03'	18.50'	N45°01'26"E	26.14'									

LINE TABLE - C/L ROADWAYS

NUM	BEARING	DISTANCE
L15	N21°41'12"E	96.60'
L16	S0°04'29"E	108.62'
L17	N0°02'19"W	174.93'
L18	N89°57'41"E	181.73'
L19	S89°58'23"E	154.27'
L20	S89°58'23"E	249.50'
L21	S0°04'29"E	31.10'

CURVE TABLE - C/L ROADWAYS

NUM	DELTA	ARC	RADIUS	BEARING	DISTANCE
C1	21°45'41"	197.50'	520.00'	S10°48'21"W	196.32'
C2	90°06'06"	800.44'	509.00'	S44°58'34"W	720.47'
C3	226°44'17"	197.87'	50.00'	N23°20'32"W	91.80'



FIRST AVE.

CULVERT DISCHARGE ESMT

CULVERT DISCHARGE ESMT